

Multi-frequency
line location system

vLoc Range



The **NEW** range of Locators from Vivax-Metrotech for:

- ▶ **General Locating**
- ▶ **Precision Locating**
(including **Signal Direction...** patent pending)
- ▶ **Buried Marker Location**
- ▶ **Pipeline Defect Mapping**

Including (optional):

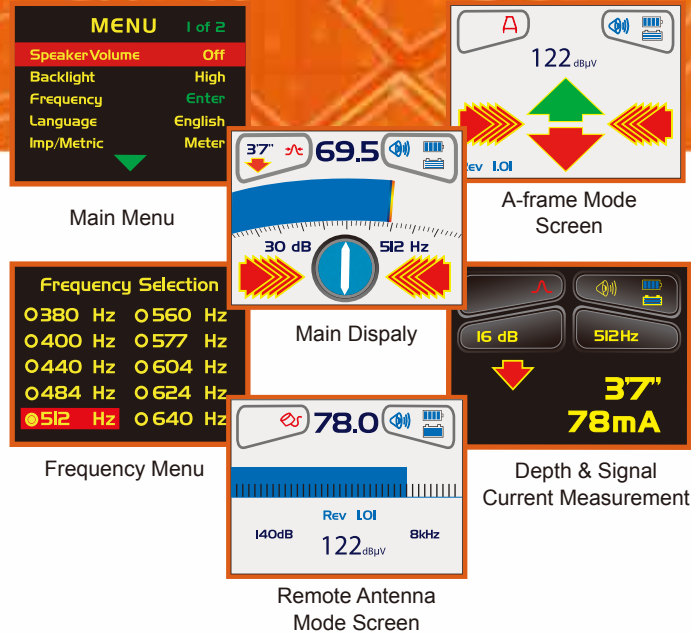
- ▶ **New accessories**
- ▶ **GPS**
- ▶ **Bluetooth**

Be ready for the future



sebaKMT

Effective and efficient location of cables and pipes



vLocPro & vLocPro-SD

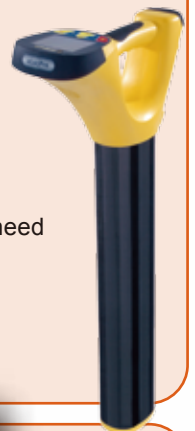
vLocPro

Vivax-Metrotech continues to develop the vLocPro range of locators to provide new levels of performance, and address additional locating and fault detecting applications. The result is this new and innovative range of locating products.

Vivax-Metrotech continues to use ABS and carbon fiber housings to provide a strong, rugged and light weight product. A dual core processor ensures lightning fast response, and a color TFT display provides information in a clear and informative way. These receivers are powered by internal rechargeable batteries together with an alkaline (emergency backup) pack, to ensure you never run out of power.

New features included:

- ▶ Compass antenna
- ▶ Continuous depth or continuous current readings (selectable)
- ▶ Improved locating response
- ▶ An intuitive menu system to configure just the features and frequencies you need
- ▶ Enhanced battery management (some models)
- ▶ Factory installed Bluetooth module options enabling GPS (some models)
- ▶ A new range of accessories and options



vLocPro-SD

Identical in appearance to the standard vLocPro, the vLocPro-SD introduces SIGNAL DIRECTION (patent pending) a new feature for confirming that the line being traced is the line to which the transmitter is connected.

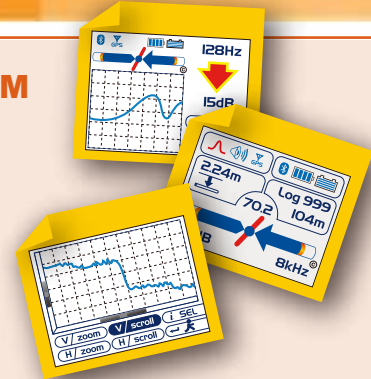




vLocML



vLocDM



vLocML

The vLocML provides the ability to line locate (only), marker locate (only), or to do both simultaneously. Search for individual marker types (power, gas, water, etc) or search for all marker types.

Most combined marker locators are dramatically heavier than a standard locator, and often have heavy clumsy fold down antennas. The carbon fiber technology used by Vivax-Metrotech makes the vLocML a light ergonomic product.

vLocDM

The vLocDM is used to collect data for pipeline coating evaluation. Optional Bluetooth/GPS enables detailed and accurate locate and location data to be stored. The locator response is displayed in a new simplified and intuitive way, incorporating the signal response, both left/right and alignment (compass) data.

Vivax-Metrotech partners with several GPS receiver manufacturers to provide the ability to capture and store locator information with GPS data.

Transmitters

Loc-150Tx



Loc-5Tx

Loc-10Tx

vLocCam Digital & vLocCam

vLocCam

The vLocCam is designed specifically to locate CCTV inspection cameras that view inside sewers, drains, and cable ducts. The vLocCam will locate 512Hz, 640Hz or 33kHz and passive signals that radiate Power or radio signals. Vivax-Metrotech also manufactures and sells **"VCAM" CCTV INSPECTION CAMERAS.**



Transmitters

Vivax-Metrotech provides 10W and 5W transmitters for use with this range of locators. Both transmitters have alkaline batteries (with rechargeable options). They can also be powered from (optional) external 12V DC or 100-240V AC power adaptors. The vLocDM transmitters provide 150W output and can be powered by 50V DC (rectifier), 110-240V AC & 12V DC (power output is limited if powered by 12V DC). See product data for individual transmitter capabilities.

Accessories:

Sonde



D18-33-SR44

- ▶ 0.75" (18mm) x 3.1" (80mm) long, 33kHz, range 12ft (4m)
- ▶ 2 x button cell batteries

D38-33-AA

- ▶ 1.5" (38mm) x 4.1" (105mm) long, 33kHz, range 15ft (5m)
- ▶ 1 x AA battery

D64-33-LR61

- ▶ 2.5" (64mm) x 7.3" (186mm) long, 33kHz, range 24ft (8m)
- ▶ 1 x LR61 battery

D23F-512-AA / D23F-640-AA

- ▶ 1" (23mm) x 18" (456mm) long, range 20ft (7m)
- ▶ "Flexible (3 section) Sonde with optional 512Hz or 640Hz for use incast iron pipes"
- ▶ 1 x AA battery

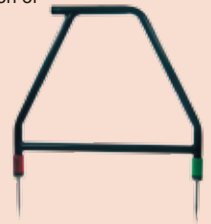
Clamp - VX4/100, VX5/125

- ▶ To apply the transmitter signal to a target cable when no access to the conductor is possible
- ▶ 5" diameter (125mm), 4" diameter (100mm)



A-frame

- ▶ For detecting the position of ground/sheath fault



LPC Separation Filter

- ▶ To apply the transmitter signal to cables carrying up to 240V AC



Loc-10Tx-Power Lead (12V DC)

- ▶ 30ft (10m) lead to power (NOT charge) the transmitter from a vehicle



Remote Antenna

- ▶ Use for cable identification



Charging Lead (12V DC)

- ▶ 12ft (4m) long lead to charge the receiver battery (or aux battery pack) in a vehicle



Rechargeable Batteries



Aux Battery (12V DC) (Rechargeable)



Ask for more information
or visit our web page:
www.sebakmt.com

SebaKMT
Dr.-Herbert-lann-Str. 6
96148 Baunach/Germany
Tel. +49(0) 95 44 - 6 80
Fax +49(0) 95 44 - 22 73
sales@sebakmt.com
www.sebakmt.com

Product Range: Instruments and Test Vans for Fault Location in Power and Telecommunication Networks and for Leak Detection in Water Distribution Systems · Cable and Pipe Locators · Seminars · Service · Contracting

Technical data subject to change without notice. **ISO 9001:2000**

sebaKMT